

\$229,000 - 1511 W 7th Street, Roswell

MLS® #190168

\$229,000

2 Bedroom, 2.00 Bathroom, 2,428 sqft
RESIDENTIAL on 0 Acres

N/A, Roswell, New Mexico

Beautiful custom built-all electric home on large corner lot! Many special features: gallery hall lined w/6' windows overlooking magnificent back yrd. w/Gazebo, serpentine-brick wall, extended covered patio. Family Rm/Library could be 3rd Bdrm. Large eat-in Kitchen has center island & utility bar, Breakfast Nook, lots of light! Basement has sump pump & cedar lined closet, propane generator. Double pane windows, Solar System, fabulous storage, central vacuum NEW roof-2018.

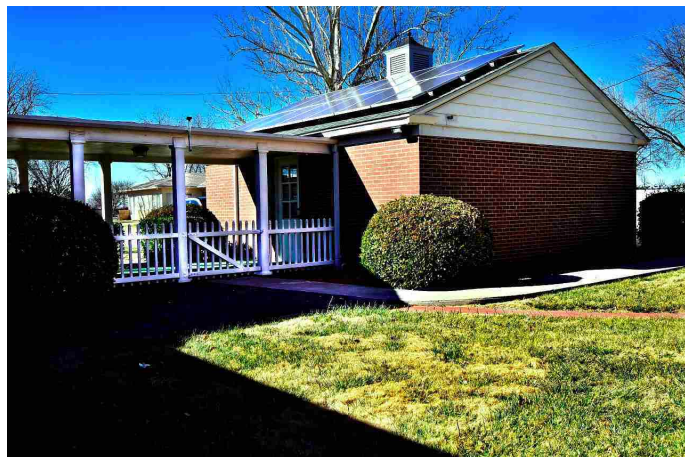
Built in 1950

Essential Information

MLS® #	190168
Price	\$229,000
Bedrooms	2
Bathrooms	2.00
Square Footage	2,428
Square Footage	2428
Acres	0.00
Year Built	1950
Type	RESIDENTIAL
Sub-Type	Single Family
Status	Active

Community Information

Address	1511 W 7th Street
Area	NW3



Subdivision	N/A
City	Roswell
County	Chaves
State	New Mexico
Zip Code	88201

Amenities

Amenities	Sprinkler System Back, Sprinkler System Front
Utilities	City Water, City Sewer, Electricity
Features	Security System, Smoke Alarm/Heat Detector, Garage Door Opener, Cable TV Available, Washer, Dryer, Water Softener Owned, Blinds/Shades, Drapes/Curtains, Rods, Ceiling Fan, RO2, Storage Shed, Gazebo, Central Vacuum
Parking	2
Garages	Detached
Has Pool	Yes
Pool	Storage Shed, Gazebo, Sprinkler System Back, Sprinkler System Front

Interior

Interior Features	Security System, Smoke Alarm/Heat Detector, Garage Door Opener, Cable TV Available, Washer, Dryer, Water Softener Owned, Blinds/Shades, Drapes/Curtains, Rods, Ceiling Fan, RO2, Central Vacuum
Appliances	Built-In Dishwasher, Built-In Oven/Range, Garbage Disposal, Trash Compactor, Refrigerator, Microwave Oven, Pantry, Wood Cabinets, Electric Range, Center Island
Heating	Heat Pump
Cooling	Heat Pump
Has Basement	Yes
Basement	Yes, Partial
Fireplace	Yes
Fireplaces	Heat Pump

Exterior

Exterior	Brick Veneer
Exterior Features	Storage Shed, Gazebo
Windows	Double Pane
Roof	Pitched, CMP/Shingle
Foundation	Concrete/Slab

Additional Information

Date Listed February 18th, 2019
Days on Market 212
Zoning Residential Low Density

Listing Details

Courtesy of RE/MAX First Place REALTORS, Inc.



© 2019 Roswell Board of REALTORS The data relating to real estate for sale in this web site come in part from the

Internet Data Exchange ('IDX') program of the Roswell Association of REALTORS ® MLS. Real Estate listings held by all Real Estate Brokers are marked with the IDX Logo.

All data in this web site is deemed reliable but is not guaranteed. Last Updated on 2019-09-18.