

# \$45,000 - 410 Mountain View Drive, Silver City

MLS® #35852

## \$45,000

3 Bedroom, 2.00 Bathroom, 1,272 sqft  
RESIDENTIAL on 1 Acres

Ridge Road Park, Silver City, New Mexico

Well maintained one owner vintage, single wide manufactured home with site built addition on an acre that is a double lot. Home has 3 full bedrooms plus sleeping loft. The addition includes large living room with wood burning stove and one large bedroom. There is a detached garage, and property is partially fence yard. An additional storage building behind house on lower level could be fixed up for guest room, studio or workshop. Lot has room for RV.

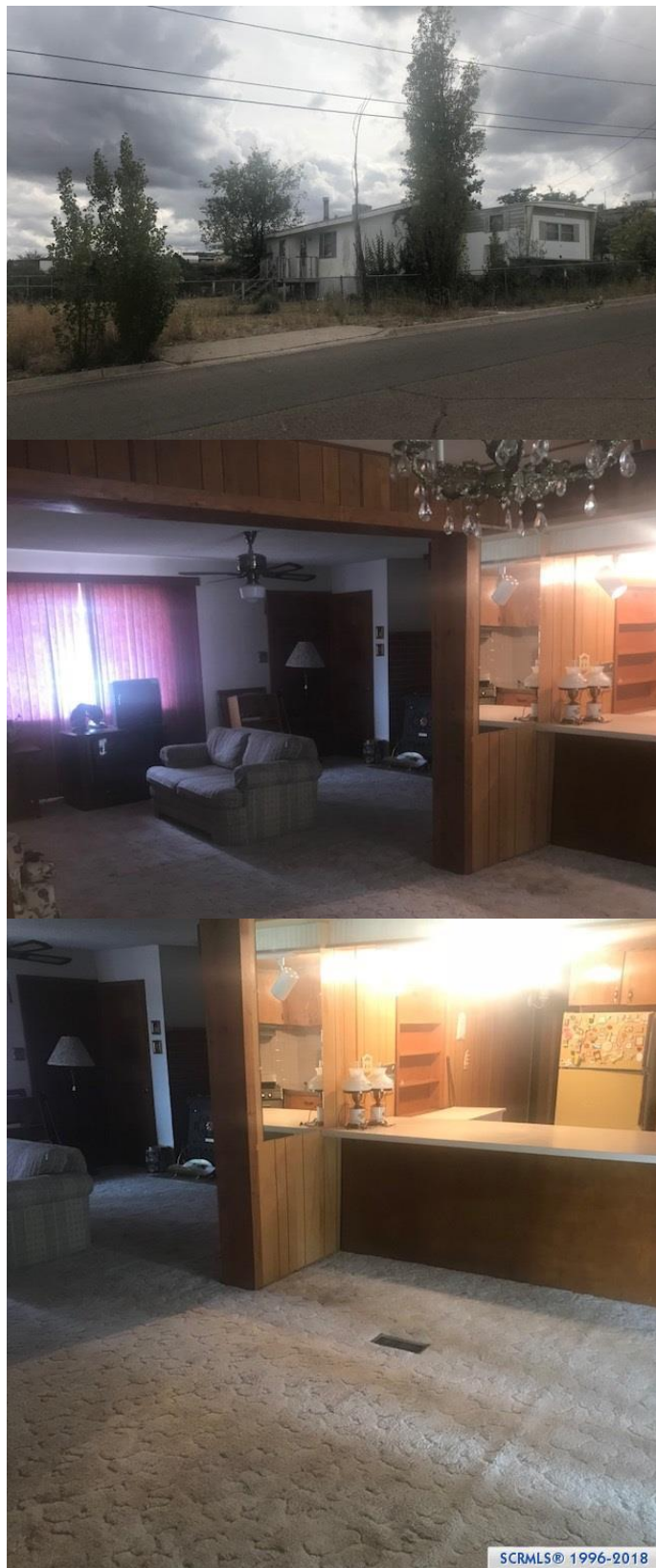
Built in 1969

## Essential Information

MLS® #	35852
Price	\$45,000
Bedrooms	3
Bathrooms	2.00
Square Footage	1,272
Acres	1.00
Year Built	1969
Type	RESIDENTIAL
Sub-Type	Manufactured-Single Wide
Style	Manufactured
Status	Active

## Community Information

Address	410 Mountain View Drive
Area	Silver City Out/Limits
Subdivision	Ridge Road Park



City	Silver City
State	New Mexico
Zip Code	88061

### **Amenities**

Features	Interior, View Mountains
Parking	Two Car
Garages	Garage Detached
View	View Mountains

### **Interior**

Appliances	Refrigerator, Gas Range
Heating	Forced Air, Wood Stove

### **Exterior**

Exterior	Aluminum, Fiber Board
Exterior Features	RV Hookup, Storage
Construction	Mfd. w/Site Built Add.

### **School Information**

Elementary	Harrison Schmitt
Middle	LaPlata Middle
High	Silver High

### **Additional Information**

Date Listed	October 18th, 2018
Days on Market	367

### **Listing Details**

Listing Office	RE/MAX Silver Advantage
----------------	-------------------------



Some of the information contained herein has been provided by the SCRMLS, Inc. This information is from sources deemed reliable and not guaranteed by SCRMLS, Inc. The information is for consumers'™ personal, non-commercial use and may not be used for any purposes other than identifying properties which consumers may be interested in purchasing.