

# \$2,023,000 - 912b N Riverside Drive, Espanola

MLS® #201700937

**\$2,023,000**

Bedroom, Bathroom, 451,750 sqft  
Commercial Land on 10 Acres

N/A, Espanola, New Mexico

Prime retail corridor in Espanola. Endless possibilities. High Visibility. Commercial and residential uses permitted. Great location. Full access. Portion of the property has residential zoning. Seller to obtain commercial zoning prior to close.

## Listing Details

Listing Agent Carlos Garcia  
Listing Office NAI Maestas & Ward Santa Fe

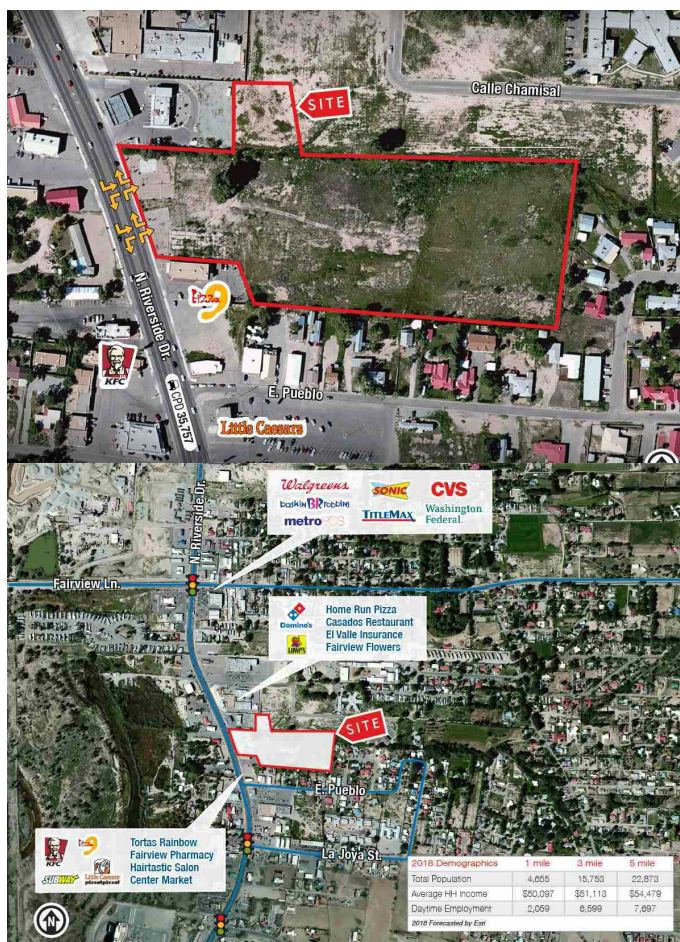
## Essential Information

MLS® # 201700937  
Price \$2,023,000  
Square Footage 451,750  
Acres 10.37  
Type Commercial Land  
Sub-Type Lot  
Status Active

## Community Information

Address 912b N Riverside Drive  
Area 32-Fairview  
Subdivision N/A  
City Espanola  
County Santa Fe  
State New Mexico  
Zip Code 87532

## Additional Information



### Espanola's Growing Economy

Espanola serves as the business and cultural hub for numerous mountain communities as distant as the Colorado border. Historically, residents of Espanola have driven to Santa Fe for shopping. Now, with the growth of retail development, they are spending their money in Espanola.

With neighboring towns demanding the highest rent rates in the state, entrepreneurs and national tenants alike are discovering Espanola. In the forefront of redevelopment, Nanticoke Mills is relocating from Santa Fe in what will be a multi-phase move of their entire silver working operation.

The re-invention of Main Street is attracting development with over half a dozen entrepreneurs opening shops on the street within a year.

Large resort style casinos including the Cross of Gold Casino, Ohay Casino, Santa Clara, and the Camel Rock have all opened up in the area as well. Packed tightly and providing hundreds of jobs, the benefits to Espanola are immeasurable.

Date Listed	March 6th, 2017
Days on Market	1052
Zoning	Other - See Remarks



The data relating to real estate for sale in this Website comes in part from the Internet Data Exchange ("IDX") program of Santa Fe Association of REALTORS®, Inc. from a copyrighted compilation of listings. Real estate listings are marked with the IDX Logo. All data in this Website is deemed reliable but is not guaranteed accurate, and should be independently verified. The information provided is for consumers' personal, non-commercial use and may not be used for any purpose other than to identify prospective properties consumers may be interested in purchasing. All properties are subject to prior sale or withdrawal. All Rights Reserved.