

\$95,000 - 5495 George Catlin Road, Las Cruces

MLS® #1703077

\$95,000

Bedroom, Bathroom, 217,800 sqft
LOTS/LAND on 5 Acres

Ebl & T Co Subd-B, Las Cruces, NM

5 Acre View lot with fantastic Views of the Organ Mountains- Desert Peaks National Monument. Plenty of space to build your dream home, Horses allowed. Utilities are close by. Easy access to University Avenue, Hospitals, Schools, Shopping centers, I-10 and I-25. Duplicate listing of MLS#1808166

Essential Information

MLS® #	1703077
Price	\$95,000
Square Footage	217,800
Acres	5.00
Type	LOTS/LAND
Sub-Type	Res Lots - Single Family
Status	Active

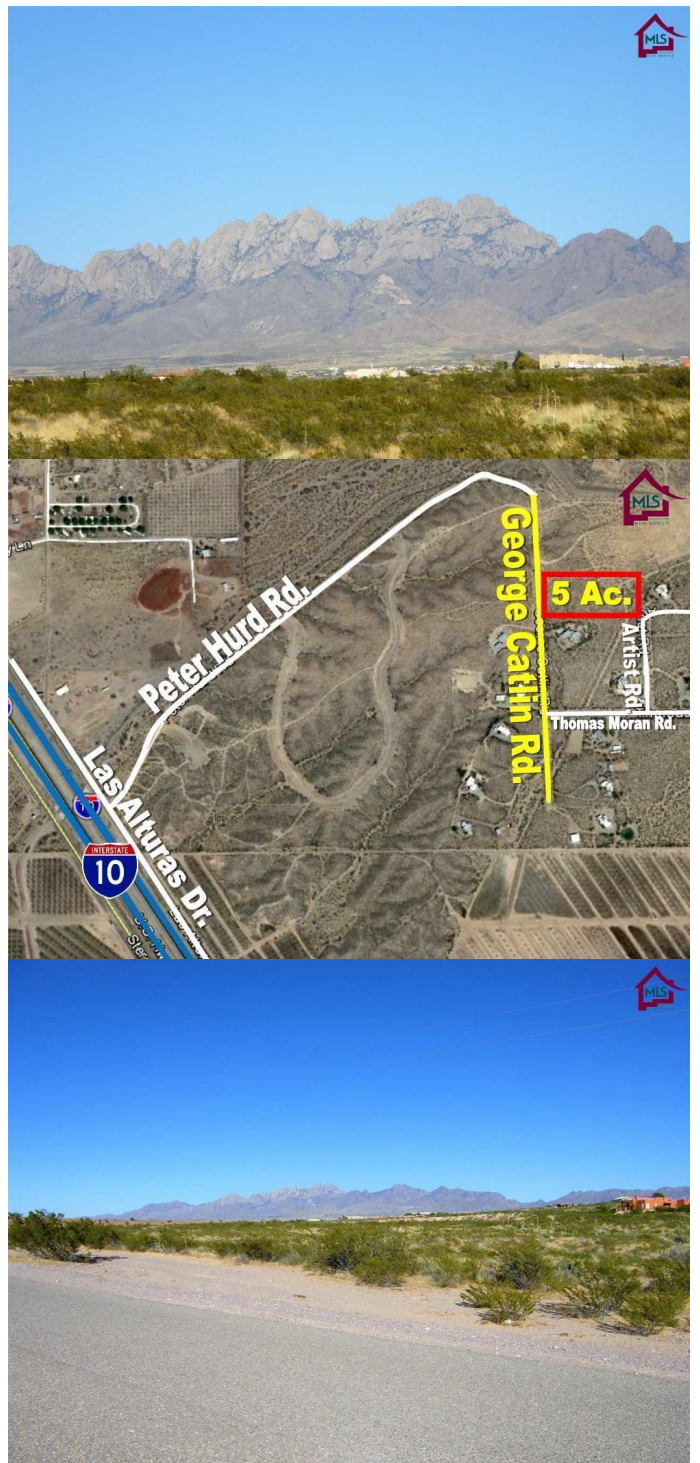
Community Information

Address	5495 George Catlin Road
Area	Las Alturas
Subdivision	Ebl & T Co Subd-B
City	Las Cruces
County	Dona Ana
State	NM
Zip Code	88011

Exterior

Lot Description Desert

Additional Information



Date Listed October 23rd, 2017

Days on Market 721

Listing Details

Listing Office RE/MAX Classic Realty

All listing information was provided by Southern New Mexico Multiple Listing Service. The information being provided is for consumers' personal, non-commercial use and may not be used for any purpose other than to identify prospective properties consumers may be interested in purchasing. Copyright © 2017 - Southern New Mexico MLS. All Rights Reserved. Copyright © 2019 - Southern New Mexico MLS. All Rights Reserved.